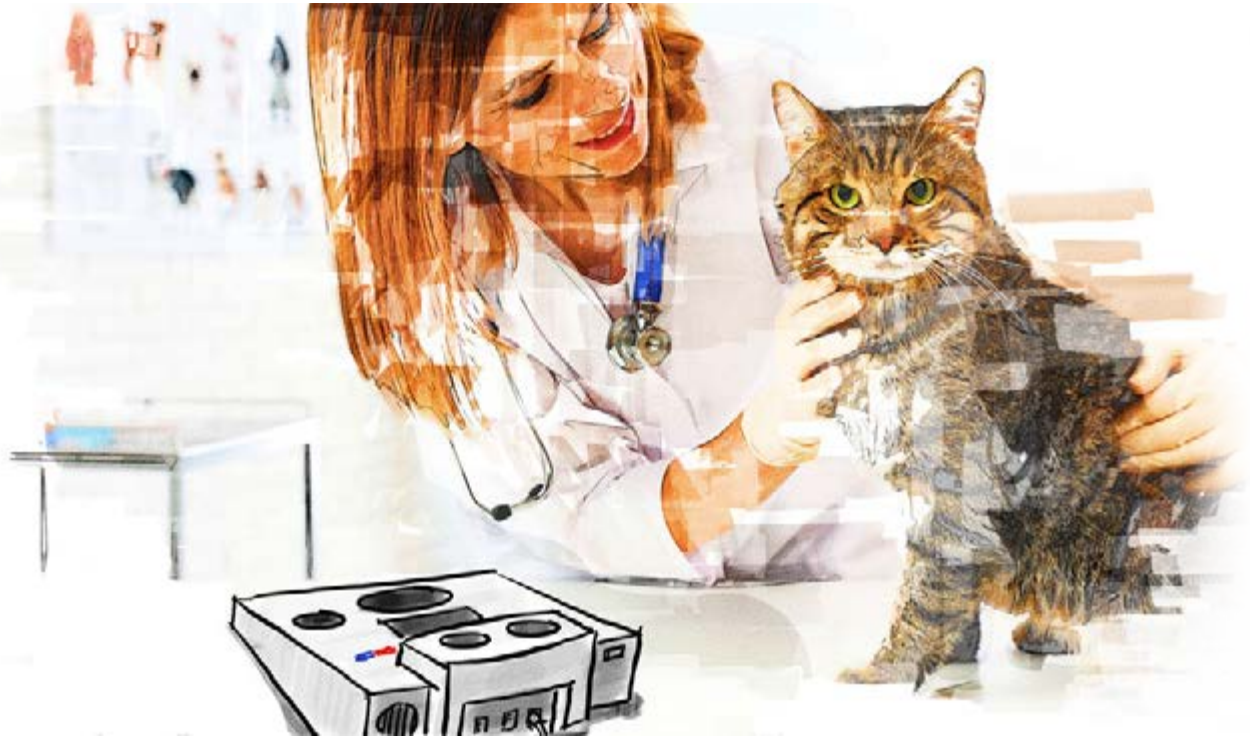




# WORKSHEETS



Copen Scope / Copen ScopeQ



Level description / OF / UF-Overview / Dental status / Focus formulations

## Overview of the correspondence of levels 1 to 12 with the individual auric layers of the chakras and meaning of the colours if they occur in a different auric layer than the one to which they are assigned

(to W. R. Raupach: „Das Chakra Aura System“)

### Level 1 to 3 Physical Body | 1st Chakra (Earth) | Sense of Smell

- Level 1: Ether layer (giving shape)
- Level 2: Liquid aura layer (supply of the water balance of the physical body)
- Level 3: Solid aura layer (supply of the manifest physical form)

- Topics: Mother, money, home, job, confidence in life, security, survival, fear
- Organ systems: Skeletal, lymphatic system, excretory organs, external genital organs, legs and feet, nose
- Mental level: Fear and insecurity of the chakra issues
- Physical level: Invigorating, warming, restorative, expulsion of tissue debris, activates sensory organs.

### Level 4 to 5 Emotional Body | 2nd Chakra (Water) | Sense of Taste

- Level 4: Liquid aura layer (supply water balance of the water element of the phys. body)
- Level 5: Solid aura layer (supply of manifest organs: internal sex organs, kidneys and gonads)

- Topics: Sexuality, feelings, emotions, parenthood, appetite, food intake, body awareness
- Organ systems: Internal genital organs, gonads (m/f), urinary organs, mouth and tongue
- Mental level: Emotive, emotional
- Physical level: Expulsive, excretory, decongestant, cleansing, allergies, stimulates tissue formation, tensions

### Level 6 Mental Body | 3rd Chakra (Fire) | Vision

- Level 6: Fire element (supply of digestive organs, skin, musculature and connective tissue)

- Topics: Power, control, freedom, personality level, responsibility, evaluation, decision
- Organ systems: Digestive organs, skin, face, pancreas, solar plexus, eyes, musculature, connective tissue
- Mental level: To control, to be tense, to be controlled
- Physical level: Binding, strengthening, stimulates nervous system, gives drive, strengthens tissues, organs, bones, skin diseases, healthy growth.

### Level 7 Astral/Mind Body | 4 Chakra (Air) | Sense of Touch

- Level 7: Air element (supply of respiratory organs, heart, circulation, immune system, thymus gland).

- Topics: Love, relationships and acceptance
- Organ systems: Respiratory organs, heart, circulation, immune system, thymus gland
- Mental level: Needing harmony, putting aside own needs, wanting to please everyone
- Physical level: Breaking down, digestive, cleansing, detoxifying, decomposes dead or diseased cells, dissolves blood clots, colds, fever.

## Level 8 to 10 Etheric Body | 5th Chakra (Communication) | Hearing

- Level 8:** Gaseous aura layer (supply of the fine perceptions such as hearing, speaking, perception of thoughts and intuition).
- Level 9:** Liquid aura layer (mediator between gaseous and physical ether)
- Level 10:** Solid aura layer (supply of ears, thyroid gland, neck, shoulders, arms and hands)

- Topics:** Communication, expression, listening to intuition, flow. Manifestation, unconditional acceptance
- Organ systems:** Metabolism, ears, neck, shoulders, hands
- Mental level:** Sense of lack
- Physical level:** Anti-inflammatory, cooling, calming, coagulant, inflammatory diseases, bleeding, burns (inhibits the activity of chakras, organs and motor function).

## Level 11 Spiritual Body | 6th Chakra (Third Eye) | Inner Sound

- Level 11:** Inner sound (supply of perceptive faculty outside the phys. Source. Seat of intuition)

- Topics:** Spiritual / individualised consciousness, the role in life, extrasensory perception/intuition
- Organ systems:** Endocrine (growth)
- Mental level:** No connection to own feelings, head-controlled, spiritualised
- Physical level:** Strongly cleansing and detoxifying, very strongly cooling and splitting

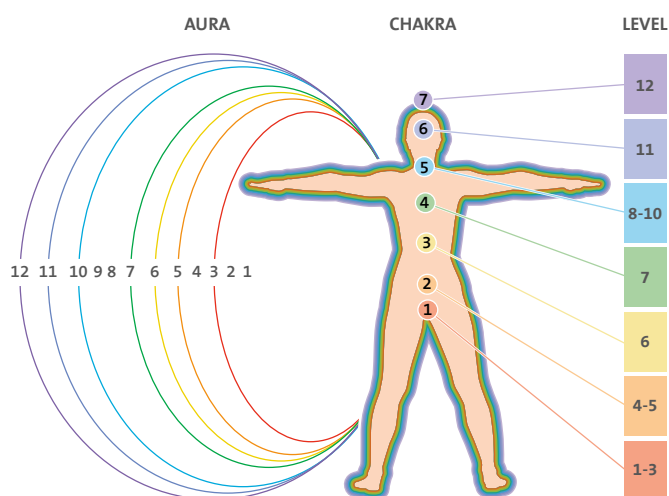
## Level 12 Causal Body (Buddha Body) | 7th Chakra (Crown Chakra) | Empathy

- Level 12:** Inner light (supply brain, nervous system, pineal gland)

- Topics:** Physical Father, Men, Universal Consciousness, Soul, Authorities, Direction of Life
- Organ systems:** CNS, epiphysis, brain
- Mental level:** Looking at the issues of the chakra with the eyes of the father, feeling like the father
- Physical level:** All properties of the 5 colour spectra, works intensively in the cell area, has its own intelligence, regenerates damaged organs and nerves, strongly disinfects, works particularly intensively in the cell area.

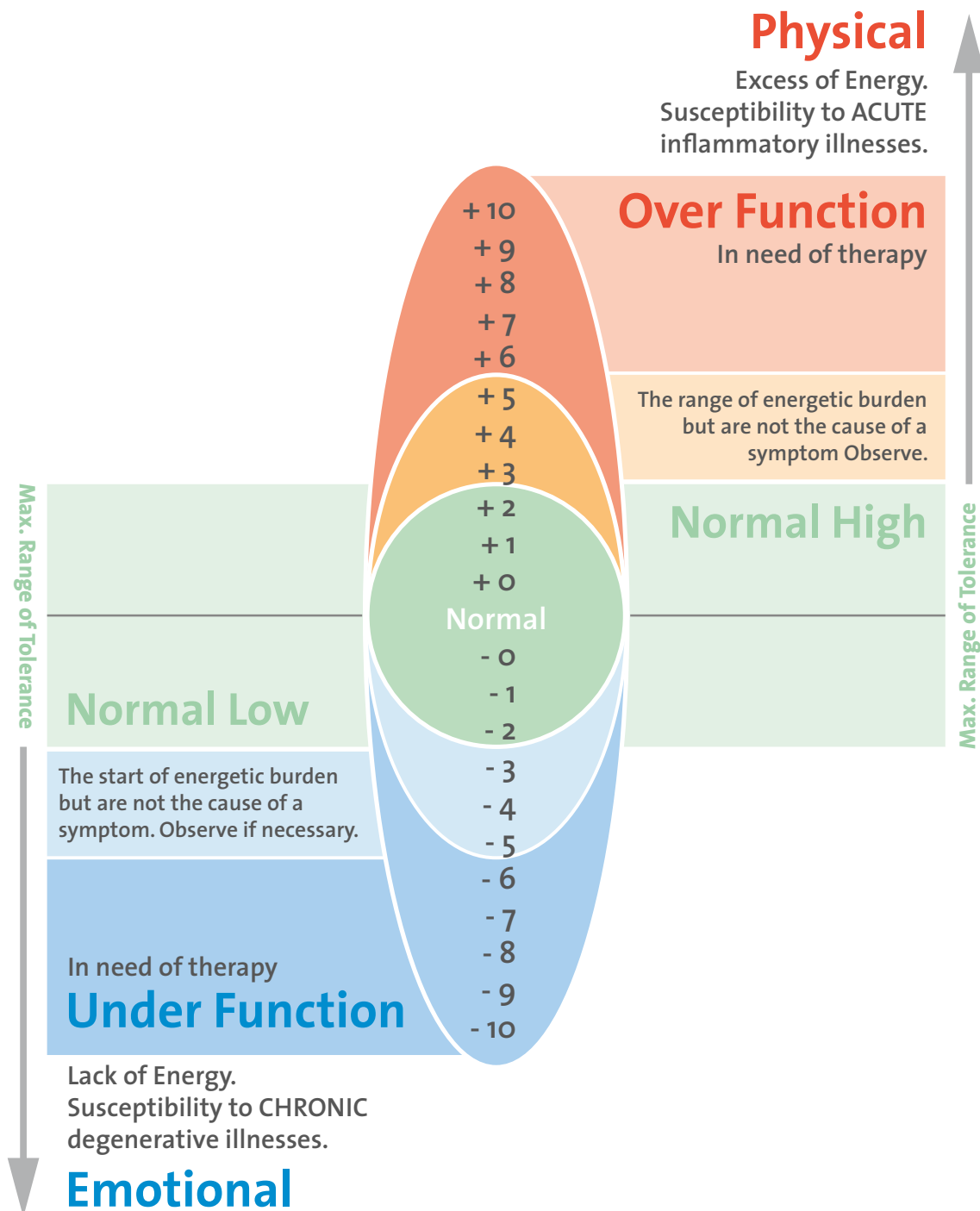
The level descriptions as on this sheet traditionally go up to LVL 12. Beyond that, encapsulated burdens of any kind (less psyche but often parasites and old burdens) often occur.

With the scope you can therefore set levels up to 49. You will learn how to deal with these high level settings (>12) in the CPR® courses.



© by Roswitha Wiwi Raupach - Extract from „Das Chakra Aura System“  
www.ml-buchverlag.de - 3. Edition 2016

## OF / UF Overview



## Dental status

duodenum ZNS	oropharynx	nose sinuses ethmoidal cells	eyes, haunch, knee	genito-urinary system inner ear	genito-urinary system inner ear	eyes, haunch, knee	nose sinuses ethmoidal cells	oropharynx	duodenum ZNS
shoulder elbow	maxillary sinus larynx	bronchia	sphenoid sinus tonsilla phar.	frontal sinus tonsilla phar.	frontal sinus tonsilla phar.	sphenoid sinus tonsilla phar.	bronchia	maxillary sinus larynx	shoulder elbow
18	17/16	15/14	13	12/11	21/22	23	24/25	26/27	28

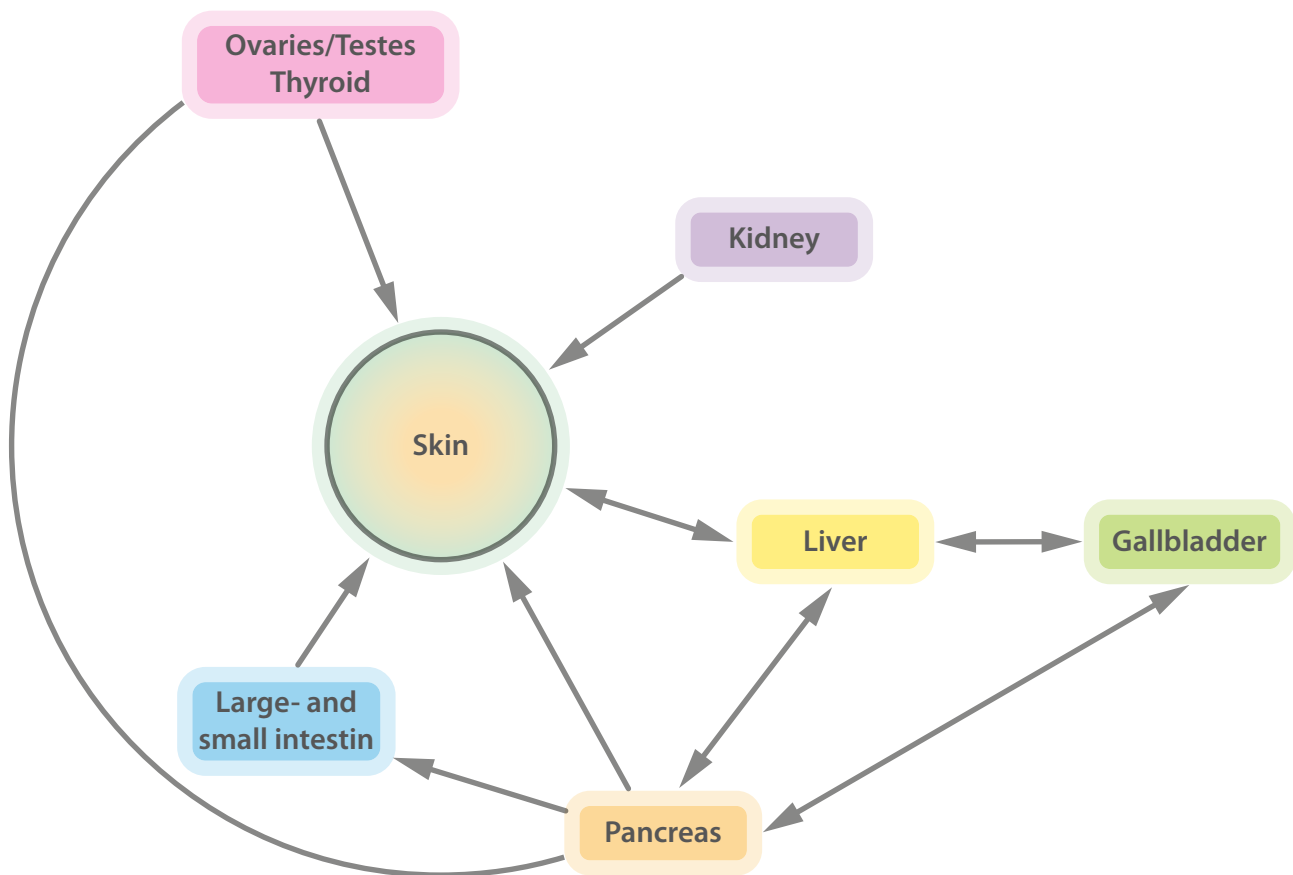
  

The diagram shows a top-down view of the upper and lower dental arches. Each tooth is positioned within a numbered box. The upper arch boxes are numbered 18 to 28 from left to right. The lower arch boxes are numbered 48 to 38 from left to right. Below the teeth, a series of colored wedges (red, purple, blue, green, yellow, orange) are arranged in a fan shape, corresponding to the numbered boxes. The colors transition from red on the far left and right to purple, blue, green, yellow, and orange in the center.

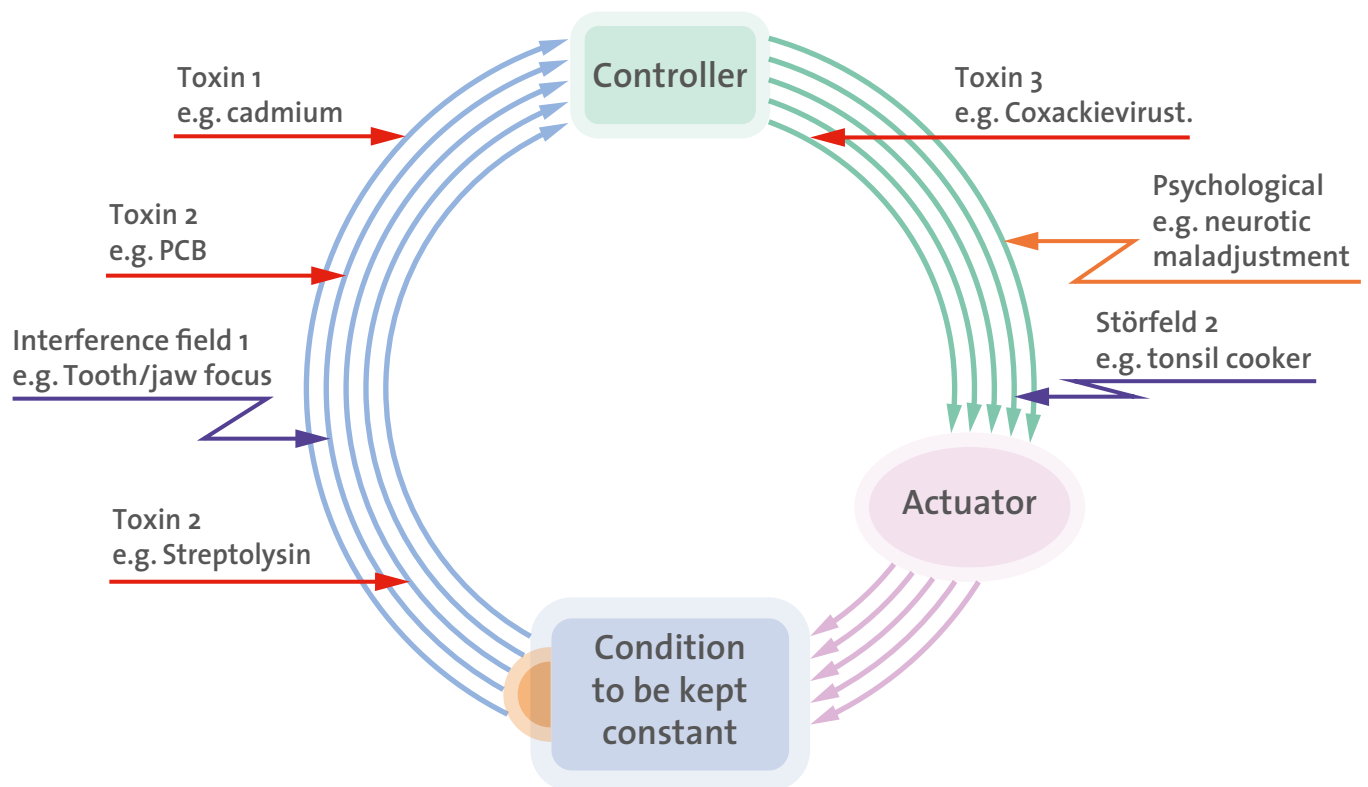
48	47/46	45/44	43	42/41	31/32	33	34/35	36/37	38
shoulder elbow	bronchia	lymphatic vessels mammary gland	sphenoid sinus tonsilla phar.	frontal sinus tonsilla phar.	frontal sinus tonsilla phar.	sphenoid sinus tonsilla phar.	lymphatic vessels mammary gland	bronchia	shoulder elbow
jejunum									
ileum middle ear periph. nerv	nose sinuses anterior ethmoidal cells	oropharynx maxillary sinus larynx	eyes, haunch, knee	genito-urinary system inner ear	genito-urinary system inner ear	eyes, haunch, knee	oropharynx maxillary sinus larynx	nose sinuses anterior ethmoidal cells	ileum middle ear periph. nerv
heart small intestine	lunge large intestine	pankreas stomach	liver gall bladder	kidney bladder	kidney bladder	liver gall bladder	pankreas stomach	lunge large intestine	heart small intestine

## Causal chain skin

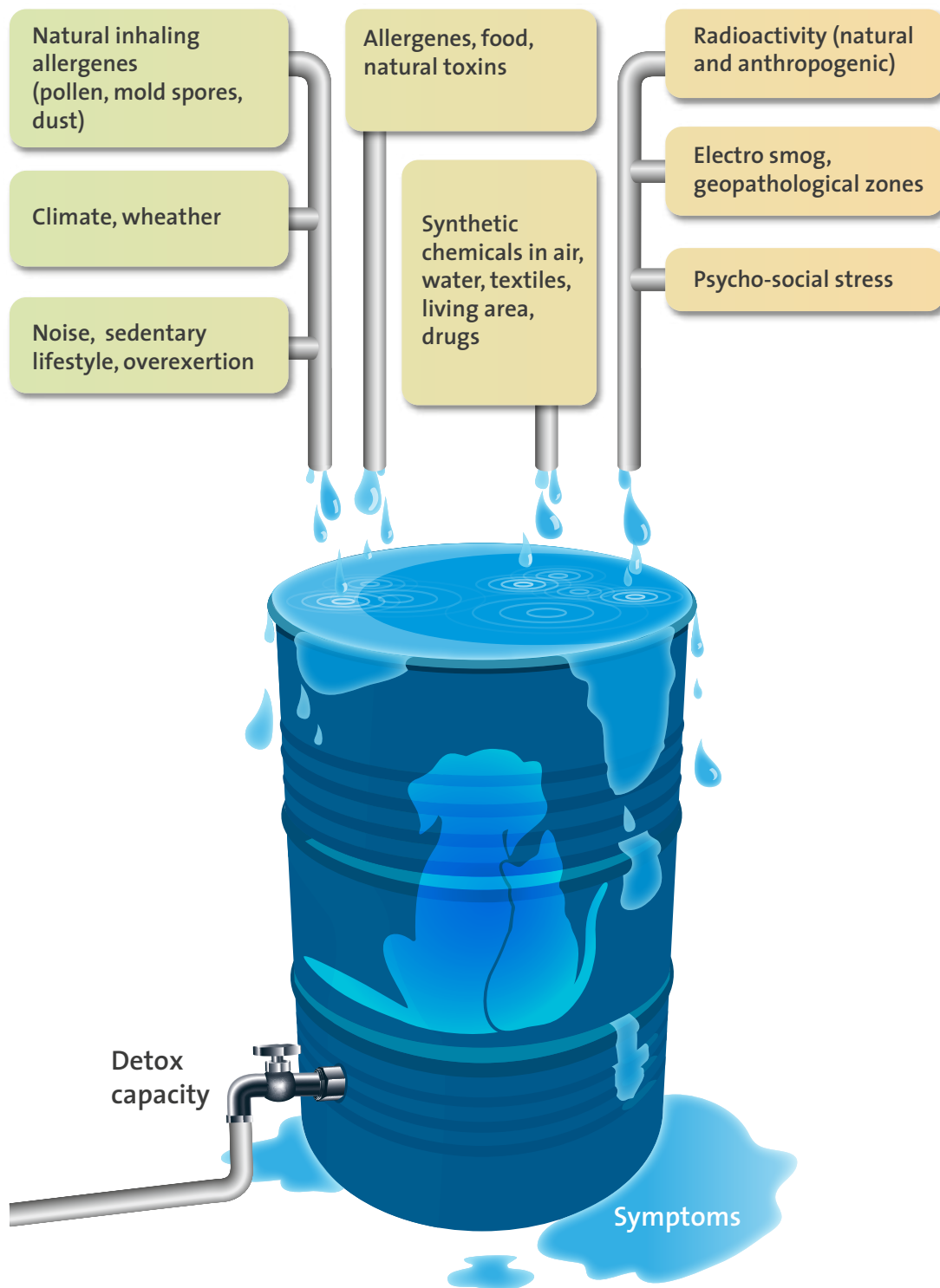
---



## Model of the premorbid compensatory capacity of regulatory disorders in the organism



## Multiple factors veterinary





## Formulations for the focus<sup>©</sup>

---

### Pure search for causes:

---

„Find cause(s) behind [symptom(s)]“.

- e.g. „Find the cause(s) behind the dry cough, flaky skin and fatigue“.

### Focus on clarification and healing:

---

„Clarify and heal possible causes and energetic blockages behind [symptom/s]“.

- e.g. „Clarify and heal possible causes and energetic blockages behind the lameness at the front right“.

### Focus on desired condition (often prophylaxis):

---

- e.g. „Growing up healthy and protected“.
- „Free, easy breath; healthy skin“.
- „Balance in body, mind and soul“
- „I find my way back to my centre“

### Search for something specific (e.g. food, allergies, etc.):

---

**! Attention ! It must be clear beforehand what you are looking for.**

**For example, am I looking for the incompatible feeds or the particularly well-tolerated feeds?**

- e.g. „intolerable“
- „Particularly well tolerated“
- „Allergies“
- „Current lack of“ (vital substances, goes on analogously with surpluses)
- „Current supply of vital substances“ (2-in-1, then only with UF/OF)

**In addition, a specific thing can be addressed**

- e.g. „best supplementary feed to activate the metabolism“.

### ...when you don't know where to start....

---

„Check-Up“

### In general:

---

- Avoid diagnoses (especially from others), rather list the symptoms.
- Formulate positively, i.e. focus on cause research, healing, etc. á „where focus goes, energy flows“.

© emotionPferd | Energetische Tierheilpraxis | [www.emotionpferd.com](http://www.emotionpferd.com)